



**楚天微球**  
TRUKING MICRO-SPHERE

Truking Micro-sphere Biotechnology Co.  
Product manual

Instruction Manual No.: 224  
Edition number: 01  
Effective date: 2025.01.01

# **TA-Q XL BB**

## **High Flow Rate High Capacity**

## **Strong Anion Exchange**

## **Chromatography Resin**

### **Product Manual**



**楚天微球生物技术(长沙)有限公司**  
TRUKING MICRO-SPHERE BIOTECHNOLOGY (CHANGSHA) CO., LTD

# Content

1. Product Introduction .....	3
2. Methods of use .....	4
3. Cleaning and regeneration .....	6
4. Sterilization and storage .....	6
5. Destruction and recycling .....	7
6. Ordering Information .....	7

## 1. Product Introduction

Ion exchange chromatography (IEX) is a class of very effective biomolecule separation and purification methods, the method mainly relies on the interaction between positive and negative charges, the use of different biomolecules in specific conditions with the nature of the charge and the number of differences in order to carry out the separation, which has a high loading capacity, good resolution, controllable conditions, easy to amplify the characteristics of the It has been widely used in medicine, chemical industry, metallurgy, food and other fields.

Ion exchange media is composed of three parts: (1) crosslinked mesh framework, the framework has a porous, hydrophilic, good chemical stability; (2) fixed on the framework of the functional group, it is the charge group, determines the nature of the ion exchange chromatography media; (3) and the functional group of the ion with an opposite charge (can be called the balance of the ion), the ion can be reversible with the combination of the functional group.

The XL Big Beads series media are based on a large highly cross-linked agarose base frame with linear dextran molecules coupled first, and then various functional groups coupled to the dextran molecules. This structure reduces the site-barrier effect between biomolecules and can greatly increase the loading of target molecules. The large particle base frame tolerates poorly clarified samples, is less prone to column clogging, and has a fast flow rate, making it suitable for processing large volumes of samples in a short period of time.

TA-Q XL BB is a strong anion-exchange medium that captures biomolecules directly from the feed solution and has a fast flow rate suitable for large-scale production applications.

**Table 1 TA-Q XL BB Technical Parameters**

Appearance	White paste, layered on placement
Framework	6% highly cross-linked agarose with dextran chains
Functional groups	-N <sup>+</sup> (CH <sub>3</sub> ) <sub>3</sub> (quaternary ammonium group)
Particle size distribution range	100~300 μm
Ion loading	230~330 μmolCl <sup>-</sup> /mL filling medium
Pressure resistance	0.3 MPa
Operating pH range	2~12
Chemical stability	Common aqueous phase solutions, 1M NaOH, 6M guanidine hydrochloride, 30% isopropyl alcohol, 70% ethanol; avoid contact with oxidizing agents
pH stability	2~14 (CIP); 2~12 (work)
Temperature tolerance	Use temperature 4~40°C, can't freeze
Storage	2~30°C, 20% ethanol or 2% benzyl alcohol
Recommended Flow Rate	300~900cm/h

## 2. Methods of use

### 2.1 Chromatography column loading

*Note: It is best to equilibrate the media suspension to room temperature before loading the column.*

- Calculate the amount of TA-Q XL BB needed based on the volume of the chromatography columns

Settling volume required = column volume x 1.15 (i.e., compression ratio of approximately 1.15)

Volume of media suspension required = volume of settling media ÷ concentration of media suspension.

*Note: The concentration of Truking Microsphere's original packaging media suspension is 80%, for non-original concentration of media suspension, customers can calculate the required volume according to the actual concentration of media suspension.*

- Replacement solution: pour the gel suspension into a Brinell's funnel, draw off the liquid and wash it with about 3 times the volume of the loading solution (purified water), (when the volume is relatively large or the conditions are not available, you can also use to wait for the gel to be delaminated to draw off the upper layer of solution, and then add an appropriate amount of loading solution stirring and wait for the delamination to be withdrawn, and then repeat the method of replacing the media solution for 3 times)
- Gel suspension preparation: In order to get a better column loading effect, the concentration of the gel suspension should be between 50% and 75%, i.e., the volume of the sinking gel is one-half to three-quarters of the total volume, stir well and set aside.
- Take a cleaned TK-EC chromatography column (the diameter of TK-EC series chromatography columns ranges from 1cm to 45cm in various specifications to meet the different sizes of chromatography applications), drain the membrane air bubbles at the bottom of the column and keep about 1cm high liquid column at the bottom of the column, and adjust the column so that it is perpendicular to the ground.
- Pour the stirred gel suspension slowly into the chromatography column one at a time (using a column loader if necessary), taking care not to introduce air bubbles.
- Connect the upper column head to the chromatography system or peristaltic pump, drain the air bubbles under the screen of the upper column head (for the chromatography column with diameter less than 20cm, you can use the peristaltic pump or the earwash ball to suck out the air bubbles under the screen after turning the column head upwards), put the column head into the chromatography column, shake the column head so that the air bubbles can be discharged from the edge of the column head, and then screw the sealing knob tightly. (For the chromatography column with diameter >30cm, do not tighten the sealing ring too much, press down the head of the shaft to let the liquid inside the column back out through the column head to discharge the air bubbles inside the column head, and then tighten the sealing knob).
- Set the flow rate (for the loading height of 15~20cm TA-Q XL BB can be set to 1000cm/h), start the pump pressure until the gel surface is stable, if the pressure exceeds 0.3MPa during the loading process, the flow rate needs to be reduced appropriately. Mark the height of the column bed when it is stable.
- Remove the column loader (if there is one), lower the column head to the position of about 0.5cm on the glue surface, continue to press the column according to the flow rate above until the glue surface is clear and stable, mark the position of the glue surface.
- Stop the pump, open the valve/plug on the plunger head, close the valve/plug on the bottom of the plunger, slightly relax the plunger head sealing ring, press the plunger head down to about 0.3cm below the marked position, tighten the plunger head sealing ring, close the plunger head valve/plug, and the loading of the plunger is completed.

## 2.2 Column Effectiveness Evaluation

Column efficiency can be determined by using acetone as indicator or NaCl as indicator, and the indicator solution and mobile phase are prepared according to the following table.

**Table 2: Column efficiency determination methods**

Methods	Acetone Method for Column Efficacy	Column Efficacy by NaCl Method
Sample	1.0% (v/v) acetone in water	0.8M NaCl (dissolved in water)
Sample volume	1.0% column volume	1.0% column volume
Mobile phase	Water	0.4M NaCl aqueous solution
Flow rate	30 cm/h	30 cm/h
Detection Data	UV 280 nm	Conductivity

## 2.3 Calculating Column Effect

Theoretical plate height (HETP), theoretical number of plates (N) and asymmetry factor (As) were calculated from the UV or conductivity curves with the following equations:

$$HETP=L/N$$

$$N=5.54(V_R/W_h)^2$$

Where:  $V_R$  = retained volume

$W_h$ =half peak width

$L$ =column height

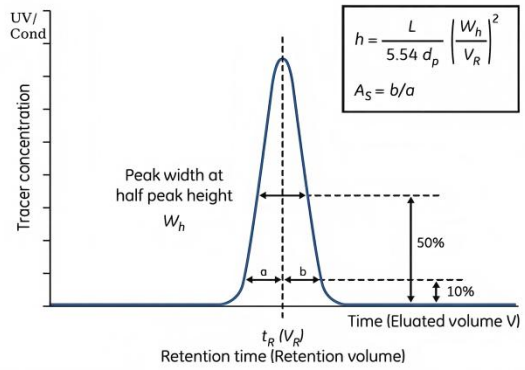
$N$ =theoretical plate number

The units of  $V_R$  and  $W_h$  should be the same;

$$A_s=b/a$$

Where:  $a$ = first half peak width at 10% peak height

$b$ = second half peak width at 10% peak height



## 2.4 Evaluation of results

$$h=HETP/d_{50v}$$

$d_{50v}$  = median particle size volume distribution (cm)

The  $h$ -value calculated by the above formula is less than 3, and the asymmetry factor is 0.8~1.8 then it is judged to be qualified. For unsatisfactory column efficiency the reason needs to be analyzed and the column reloaded.

## 2.5 Chromatographic methods

- **Buffer selection:** buffer salt whose buffer group does not interact with the medium should be selected, low salt (less than 5ms/cm) and high pH (usually 1 pH unit above the isoelectric point of the target) buffer is preferred for equilibrium buffer to favor the binding of the target, and the stability of the target in the buffer needs to be considered.The elution buffer is usually a buffer with a high concentration of salt (e.g. 1M NaCl) added to the equilibration buffer or a low pH elution.
- **Flow rate:** According to the height of the column generally choose 300~900cm/h flow rate, the higher the column height the slower the flow rate.
- **Sample Preparation:** To prevent the sample from clogging the column, the sample needs to be filtered through a 0.45  $\mu$ m microporous membrane and the pH and conductivity of the sample adjusted to match that of the equilibration buffer prior to sampling (the pH and conductivity of the sample can be adjusted by

dilution, ultrafiltration, and replacement of the buffer with TD-G25).

- **Equilibration:** The pH and conductivity of the buffer used to flush the chromatography column to the outlet with equilibration buffer is essentially the same as that of the equilibration buffer, and usually requires 3 to 5 times the column bed volume.
- **Sampling:** The volume of the sample is determined according to the content of the substance in the sample and the binding load of TA-Q XL BB.
- **Rinse:** Rinse the column with equilibration buffer until the UV absorption is close to baseline.
- **Elution:** A linear gradient or step gradient can be used to increase the elution strength in the eluent to elute substances with different binding strengths from the chromatography column and collect different fractions to detect where the target is located.
- **Regeneration:** Flush the chromatography column with a salt containing a high concentration (e.g. 2M NaCl).
- **Re-equilibration:** Rinse with the equilibration buffer, and when the pH and conductivity are essentially the same as the equilibration buffer, a second sample can be taken, and so on.

### 3. Cleaning and regeneration

As the number of times the chromatography medium is used increases, the accumulation of contaminants on the chromatography column also increases. Regular in-situ cleaning prevents the accumulation of contaminants and maintains a stable working condition. Determine the frequency of in-situ cleaning according to the degree of contamination of the media (if contamination is severe, it is recommended that in-situ cleaning be performed after each use to ensure reproducibility of results).

Recommended cleaning conditions for different types of impurities and contaminants are as follows:

- Start by rinsing off the more tightly bound proteins with 2 column volumes of 2M NaCl, or optionally 1M NaAC at pH 3 to clean the more strongly bound proteins by changing the pH.
- For the removal of strongly hydrophobic proteins and precipitated proteins: first wash with 2-3 column volumes of 1M NaOH, then immediately rinse with 5-10 column volumes of pure water.
- Removal of lipoproteins and lipids: Wash with 5-10 column volumes of 70% ethanol or 30% isopropanol, followed by a rinse with 5-10 column volumes of pure water.
- Cleaning can also be carried out by combining the above two cleaning conditions, i.e., cleaning with a 30% isopropanol solution containing 1M NaOH.

*Note: 70% ethanol or 30% isopropanol should be degassed before use; the flow rate can be selected from 30-60cm/h during bit cleaning; reverse cleaning can be used when the blockage is serious.*

### 4. Sterilization and storage

Since 20% ethanol or 2% benzyl alcohol preservation solution does not have sterilizing and de-pyrogenic effects, it is recommended that TA-Q XL BB media can be treated with 1M NaOH for 0.5~1h to reduce the risk of microbial contamination before and during use.

TA-Q XL BB is sold with 20% ethanol or 2% benzyl alcohol as preservation solution. After use, TA-Q XL BB is stored in 20% ethanol, closed at 2-30°C. To prevent volatilization of ethanol and microbial growth, it is recommended that the preservation solution be replaced with fresh preservation solution every 3 months. It is recommended to replace the preservation solution every 3 months to prevent ethanol evaporation and microbial growth.

5. Destruction and recycling

Since TA-Q XL BB is difficult to degrade in nature, incineration is recommended for environmental protection.

6. Ordering Information

Table 3 Article number and packaging

Product	Item No.	Norm
TA-Q XL BB	D208201	25mL
	D208202	100mL
	D208203	500mL
	D208204	1L
	D208205	5L
	D208206	10L
	D208207	20L