

TH-Q Fine

Highly rigid high-resolution strong anion exchange resin

Product Manual



Content

1. Product Introduction	3
2. Methods of use	4
3. Cleaning and regeneration	6
4. Sterilization and storage	6
5. Destruction and recycling	7
6. Ordering Information	7

1. Product Introduction

Ion exchange chromatography (IEX) is a very effective method for the separation and purification of biomolecules, which mainly relies on the interaction between positive and negative charges, and utilizes the differences in the nature and amount of charges carried by different biomolecules under specific conditions to carry out the separation, and it is characterized by high loading capacity, good resolution, controllable conditions, and easy to be amplified. It has been widely used in medicine, chemical industry, metallurgy, food and other fields. Ion exchange media is composed of three parts: (1) crosslinked mesh framework, the framework has a porous, hydrophilic, good chemical stability; (2) fixed on the framework of the functional group, it is the charge group, determines the nature of the ion exchange chromatography media; (3) and the functional group of the ion with an opposite charge (can be called the balance of the ion), the ion can be reversible with the combination of the functional group.

TH-Q Fine is a strong anion exchange medium formed by coupling quaternary ammonium groups to finer grained, highly rigid agarose microspheres, with a higher resolution than TH-Q, and is suitable for the fine purification or medium purification stages of the chromatography step.

Table 1 TH-Q Fine Technical Parameters

Appearance	White paste, layered on placement
Framework	Highly rigid agarose
Functional groups	-N ⁺ (CH ₃) ₃ (quaternary ammonium group)
Average particle size	36~44μm (average 40μm)
Ion load	150~180μmol Cl ⁻ /mL filling medium
Dynamic binding load	>50mg BSA/ml Filling medium
Pressure resistance	0.5 MPa
Chemical stability	Common aqueous phase solutions: 1M NaOH ⁺ , 1M HAc ⁺ , 70% ethanol, 20% ethanol, 30% isopropanol, 6M guanidine hydrochloride, 8M urea, 100mM thioglycerol+25mM Tris pH8.5, 0.1M citric acid +8M urea +1M NaCl pH2.5, 0.1M citric acid + 8M urea pH2.5; Avoid contact with oxidizing agents, cationic detergents
pH stability	2~14 (CIP); 2~12 (working)
Temperature tolerance	Use temperature 2~40°C, can't freeze
Storage++	2~30°C, 20% ethanol or 2% benzyl alcohol
Recommended Flow Rate	90~300cm/h

+1M NaOH and 1M HAc for cleaning only.

++2% Benzyl Alcohol for foreign shipments only or as specified by the customer.

2. Methods of use

2.1 Chromatography column loading

Note: It is best to equilibrate the media suspension to room temperature before loading the column.

- Calculate the amount of TH-Q Fine needed based on the volume of the chromatography columns

Settling volume required = column volume x 1.15 (i.e., compression ratio of approximately 1.15)

Volume of media suspension required = volume of settling media ÷ concentration of media suspension.

Note: The concentration of Truking Microsphere's original packaging media suspension is 80%, for non-original concentration of media suspension, customers can calculate the required volume according to the actual concentration of media suspension.

- Media washing: Shake the media suspension well and measure the volume calculated by the above method, pour it into a funnel, draw off the liquid and wash it with about 3mL of column filling solution (20% ethanol+0.4M NaCl)/mL of media, repeat the washing 3 times, each time when adding the washing solution, it is necessary to use a glass rod or stirring stick to stir in order to wash off the original preservation solution better.
- Gel suspension preparation: In order to get a better column loading effect, the concentration of the gel suspension should be between 50% and 75%, i.e., the volume of the sinking gel is one-half to three-quarters of the total volume, stir well and set aside.
- Take a cleaned TK-EC chromatography column (the diameter of TK-EC series chromatography columns ranges from 1cm to 45cm in various specifications to meet the different sizes of chromatography applications), drain the membrane air bubbles at the bottom of the column and keep about 1cm high liquid column at the bottom of the column, and adjust the column so that it is perpendicular to the ground.
- Pour the stirred gel suspension slowly into the chromatography column one at a time, taking care not to bring in air bubbles, and stirring again with a plastic rod after pouring.
- Connect the upper column head to the chromatography system or peristaltic pump, drain the air bubbles under the screen of the upper column head (for the chromatography column with diameter less than 20cm, you can use the peristaltic pump or the earwash ball to suck out the air bubbles under the screen after turning the column head upwards), put the column head into the chromatography column, shake the column head so that the air bubbles can be discharged from the edge of the column head, and then screw the sealing knob tightly. (For the chromatography column with diameter >30cm, do not tighten the sealing ring too much, press down the head of the shaft to let the liquid inside the column back out through the column head to discharge the air bubbles inside the column head, and then tighten the sealing knob).
- When the column height is 20cm, the flow rate can be set to 300cm/h. Open the bottom valve/plug of the chromatography column, turn on the flow rate, use the set flow rate to press until the gel surface is clear and stable, mark the position when the gel surface is stable.
- Remove the column loader (if there is one), install the upper column head, lower the column head to a position about 0.5 cm above the glue surface, and continue to press the column according to the flow rate above until the glue surface is clear and stable, mark the position of the glue surface.
- Stop the pump, open the valve/plug on the column head, close the valve/plug at the bottom of the column, slightly relax the sealing ring of the column head, press down the column head to about 0.5cm below the marking position, tighten the sealing ring of the column head, close the valve/plug at the column head, and the installation of the column is completed.

2.2 Column Effectiveness Evaluation

Column efficiency can be determined by using acetone as indicator or NaCl as indicator, and the indicator solution and mobile phase are prepared according to the following table.

Table 2: Column efficiency determination methods

Methods	Acetone Method for Column Efficacy	Column Efficacy by NaCl Method
Sample	1.0% (v/v) acetone in water	0.8M NaCl (dissolved in water)
Sample volume	1.0% column volume	1.0% column volume
Mobile phase	Water	0.4M NaCl aqueous solution
Flow rate	30 cm/h	30 cm/h
Detection Data	UV 280 nm	Conductivity

2.3 Calculating Column Effect

Theoretical plate height (HETP), theoretical number of plates (N) and asymmetry factor (As) were calculated from the UV or conductivity curves with the following equations:

$$HETP = L/N$$

$$N = 5.54(V_R/W_h)^2$$

Where: V_R = retained volume

W_h = half peak width

L = column height

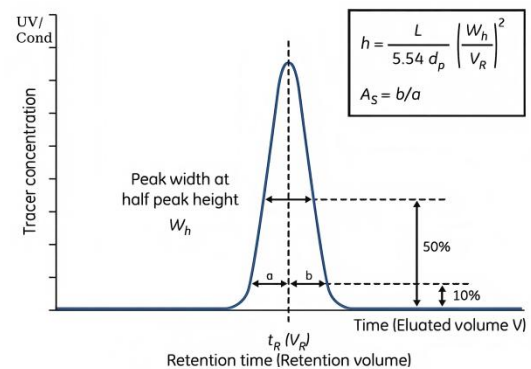
N = theoretical plate number

The units of V_R and W_h should be the same;

$$A_s = b/a$$

Where: a = first half peak width at 10% peak height

b = second half peak width at 10% peak height



2.4 Evaluation of results

$$h = HETP/d_{50v}$$

d_{50v} = median particle size volume distribution (cm)

The h -value calculated by the above formula is less than 3, and the asymmetry factor is 0.8~1.8 then it is judged to be qualified. For unsatisfactory column efficiency the reason needs to be analyzed and the column reloaded.

2.5 Chromatographic methods

- **Buffer selection:** buffer salts should be selected that the buffer groups do not interact with the medium, low salt (less than 5ms/cm) and high pH (usually 1 pH unit above the isoelectric point of the target) buffers should be used for equilibrium buffers to favor the binding of the target, and the stability of the target in the buffer needs to be taken into account. The elution buffer is usually a buffer with a high salt concentration (e.g. 1M NaCl) added to the equilibration buffer or a low pH elution.
- **Flow rate:** According to the height of the column generally choose 90~300cm/h flow rate, the higher the column height the slower the flow rate.
- **Sample Preparation:** To prevent the sample from clogging the column, the sample needs to be filtered through a 0.45 μ m microporous membrane and the pH and conductivity of the sample adjusted to match that of the equilibration buffer before loading the sample (pH and conductivity can be adjusted by dilution,

ultrafiltration, and replacement of the buffer with TD-G25).

- **Equilibration:** The pH and conductivity of the buffer used to flush the chromatography column to the outlet with equilibration buffer is essentially the same as that of the equilibration buffer and usually requires 3 to 5 times the column bed volume.
- **Sampling:** The volume of the sample is determined according to the content of the substance in the sample and the binding load of TH-Q Fine, and the sample is loaded.
- **Wash:** Wash the chromatography column with equilibration buffer until the UV absorption is close to the baseline.
- **Elution:** A linear gradient or step gradient can be used to increase the elution strength in the eluent to elute substances with different binding strengths from the chromatography column and collect different fractions to detect where the target is located.
- **Regeneration:** rinse the column with a buffer containing a high concentration of salt (e.g. 2M NaCl)
- **Re-equilibration:** Wash with the equilibration buffer, and when the pH and conductivity are essentially the same as the equilibration buffer, a second sample can be taken, and so on.

3. Cleaning and regeneration

As the number of times the chromatography medium is used increases, the accumulation of contaminants on the chromatography column also increases. Regular in-situ cleaning prevents the accumulation of contaminants and maintains a stable working condition. Determine the frequency of in-situ cleaning according to the degree of contamination of the media (if contamination is severe, it is recommended that in-situ cleaning be performed after each use to ensure reproducibility of results).

Recommended cleaning conditions for different types of impurities and contaminants are as follows:

- Removal of more tightly bound proteins: wash with 2~3 column volumes of 2M NaCl.
- For the removal of strongly hydrophobic proteins and precipitated proteins: first wash with 2-3 column volumes of 1M NaOH, then immediately rinse with 5-10 column volumes of pure water.
- Removal of lipoproteins and lipids: Wash with 5-10 column volumes of 70% ethanol or 30% isopropanol, followed by a rinse with 5-10 column volumes of pure water.
- Cleaning can also be carried out by combining the above two cleaning conditions, i.e., cleaning with a 30% isopropanol solution containing 1M NaOH.

Note: 70% ethanol or 30% isopropanol should be degassed before use; the flow rate can be selected from 30-60cm/h during bit cleaning; reverse cleaning can be used when the blockage is serious.

The plastic housing of the laboratory type TK-EC column is not resistant to organic solvents such as 70% ethanol, so care should be taken not to spill organic solvents on the housing during use.

4. Sterilization and storage

Since 20% ethanol or 2% benzyl alcohol preservation solution does not have sterilizing and de-pyrogenic effects, it is recommended that TH-Q Fine can be treated with 1M NaOH for 0.5~1h to reduce the risk of microbial contamination before and during use.

TH-Q Fine is sold with 20% ethanol or 2% benzyl alcohol as preservation solution. After use, TH-Q Fine should be stored in 20% ethanol, closed at 2~30°C. To prevent ethanol volatilization and microbial growth, it is recommended that the preservation solution be replaced with fresh preservation solution every 3 months.

5. Destruction and recycling

Since TH-Q Fine is difficult to degrade in nature, incineration is recommended to protect the environment.

6. Ordering Information

Table 3 Article number and packaging

Product	Item No.	Norm
TH-Q Fine	Y2131	25mL
	Y2132	100mL
	Y2133	500mL
	Y2140	1L
	Y2135	5L
	Y2136	10L
	Y2137	20L